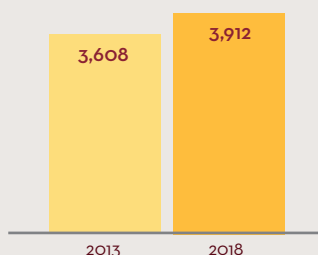




ENROLLMENT SNAPSHOT OF THE UNIVERSITY OF MINNESOTA TWIN CITIES

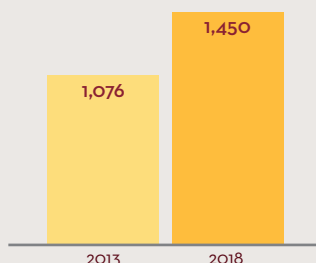
New Freshmen Enrollment Growth

Minnesota Residents



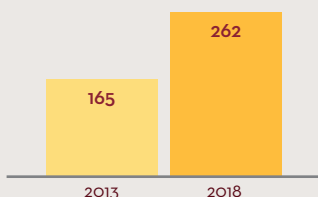
8.4% Increase from 2013 to 2018

Students of Color



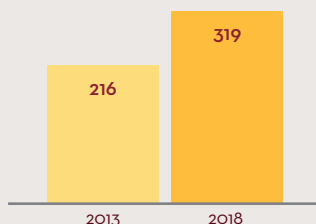
34.8% Increase from 2013 to 2018

Hispanic/Latino Students



58.8% Increase from 2013 to 2018

African American/Black Students



47.7% Increase from 2013 to 2018



NEW STUDENTS

Did You Know?

Of all new fall 2018 students (new freshman and transfer students combined):

26.6%
identify as
first generation students

19.6%
are Pell eligible students

ACT Composite Score Range SAT Total Range



The ACT composite score range of the middle 50% of new fall 2018 Freshmen: 26–31.

The SAT total range of the middle 50% of new fall 2018 Freshmen: 1300–1450.

(Note: Reporting new SAT scores for fall 2018 cohort. New SAT has a 1600 scale)

50%

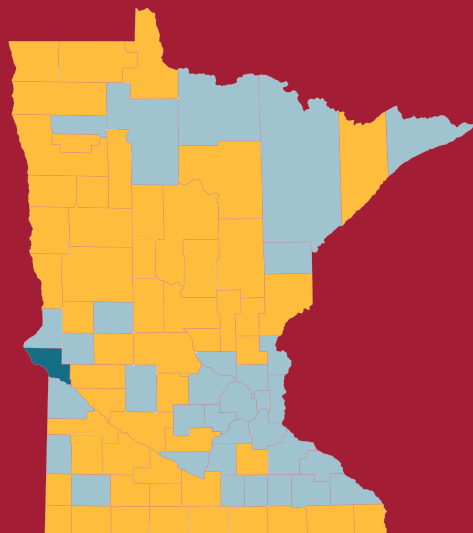
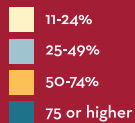


STRATEGIC ENROLLMENT MANAGEMENT AT THE UNIVERSITY OF MINNESOTA TWIN CITIES

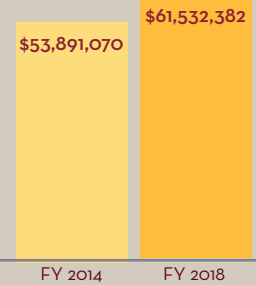
Financial Aid

The University of Minnesota System-wide Promise Scholarship Helps Make College Possible for Students in All Minnesota Counties.

Percentage of fall 2018 undergraduate degree-seeking students system-wide within each county receiving a Promise Scholarship



Increased Accessibility Through Aid



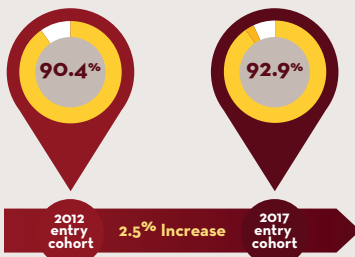
7.6
MILLION

\$7.6 million (14%) increase in institutional aid granted to UMNTC undergraduate students between FY 2014 and FY 2018

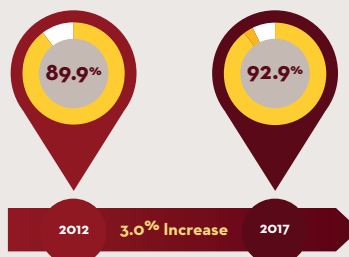


Student Success

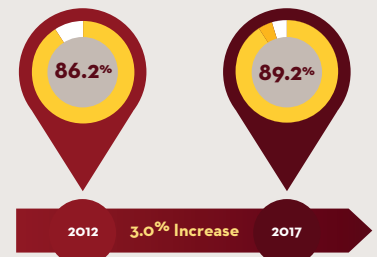
First-Year Retention Increase



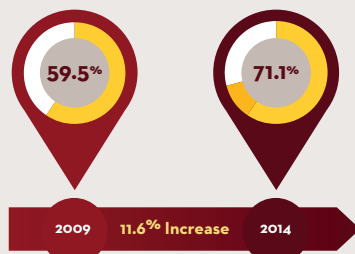
Retention of Students of Color



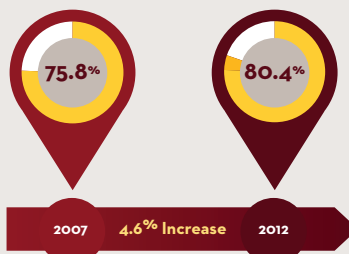
First Generation Retention Increase



Four-Year Graduation Rate Increase



Six-Year Graduation Rate Increase



STEM Bachelor's Degrees Awarded



TRANSFER STUDENTS

Did You Know?

The University of Minnesota has one of the largest transfer student populations in the Big Ten. Approximately one-third of our new undergraduates every year are transfer students:

Where do our transfer students transfer from?

33.8% from MN State 2-year schools

4.8% from MN State 4-year schools

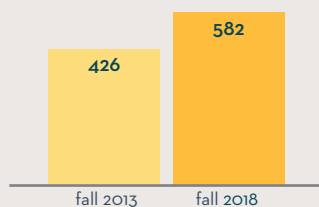
7.2% from Minnesota private schools

7.2% from the Wisconsin system

10% from other U of M campuses

37% from other schools

Increase in Twin Cities Transfer Students of Color



23.9% Increase from 2013 to 2018

ENROLLMENT MANAGEMENT AT THE UNIVERSITY OF MINNESOTA TWIN CITIES



“Student success is always our number-one focus. Our continued growth in student satisfaction, record retention and graduation levels, and

increased financial support are all important elements in making sure that we are serving Minnesota families and fulfilling our leadership role as the state’s flagship.”

— Robert B. McMaster, Vice Provost and Dean of Undergraduate Education

WORLD-CLASS FACULTY & SCHOLARSHIP

The research, scholarship, and creative activity of faculty and students at the University of Minnesota have long been recognized both nationally and internationally.

INTERNATIONAL AWARDS

- 26 Nobel Prize-winning faculty & former students
- 90 Guggenheim Fellowship recipients
- 1 Wolf Prize winner

NATIONAL AWARDS

- 58 American Academy of Arts & Sciences members
- 16 Institute of Medicine members
- 7 Lasker Award winners
- 2 MacArthur Foundation Fellowship recipients
- 38 National Academy of Engineering members
- 38 National Academy of Sciences members
- 1 National Book Award winner
- 2 National Medal of Science winners
- 3 Pulitzer Prize winners



10 YEARS OF OUTSTANDING UNDERGRADUATES

- 81 Fullbright Scholars
- 2 Rhodes Scholars
- 3 Truman Scholars
- 19 Astronaut Scholars
- 5 Beinecke Scholars
- 3 Churchill Scholars
- 67 Critical Language Scholars
- 1 Gates Cambridge Scholar
- 28 Goldwater Scholars
- 2 Hertz Scholars
- 2 Luce Scholars
- 7 Udall Scholars



6

NATIONALLY Ranked University

Tied for 6th in 2017 Report by
Center for Measuring University
Performance (UMass Amherst) –
tied with Ohio State and UNC
with 6 scores in top 25

37

INTERNATIONALLY Ranked University

#37 in Academic Ranking of World
Universities by Shanghai Jiaotong
University in China

<http://www.shanghairanking.com/ARWU2018.html>

ENROLLMENT MANAGEMENT AT THE UNIVERSITY OF MINNESOTA TWIN CITIES



We are the **state's only research (R1) university** and one of the top research universities in the nation.

We are the **state's public land-grant university**.

As a land-grant institution, **our mission is to serve the State of Minnesota** and to apply our knowledge to address societal issues.

Our implementation of the **Innovative Grand Challenges curricular options** is preparing our students to meet 21st-century challenges with new models of engaged, place-based education for tomorrow's leaders.